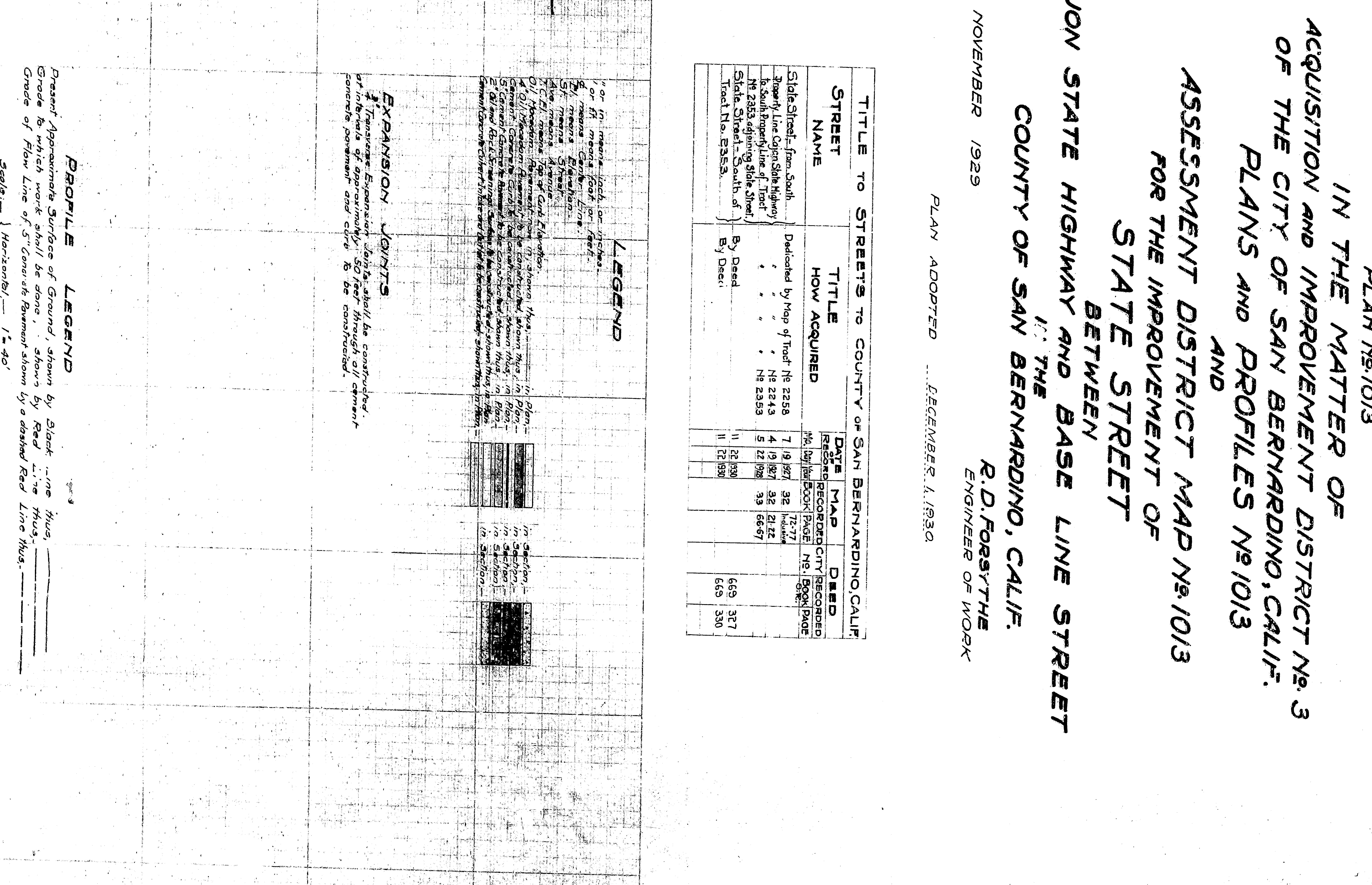
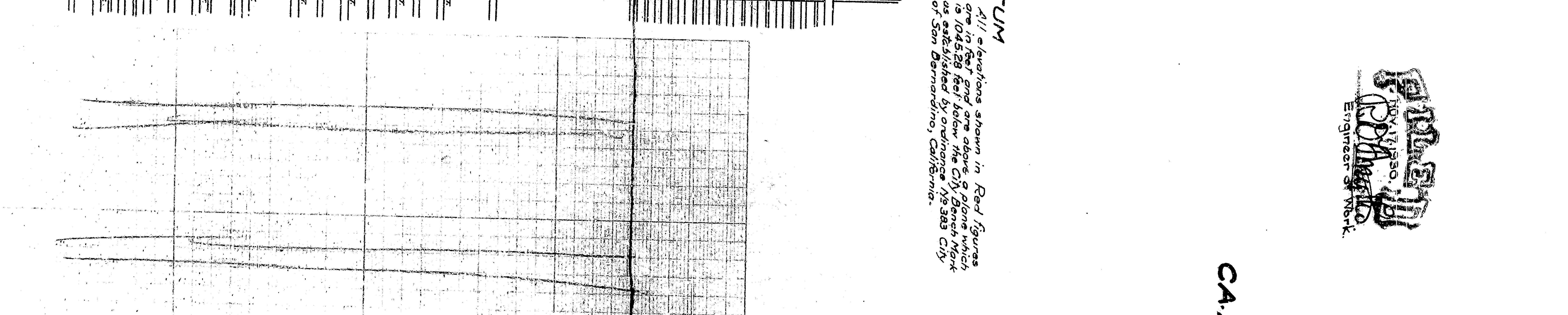
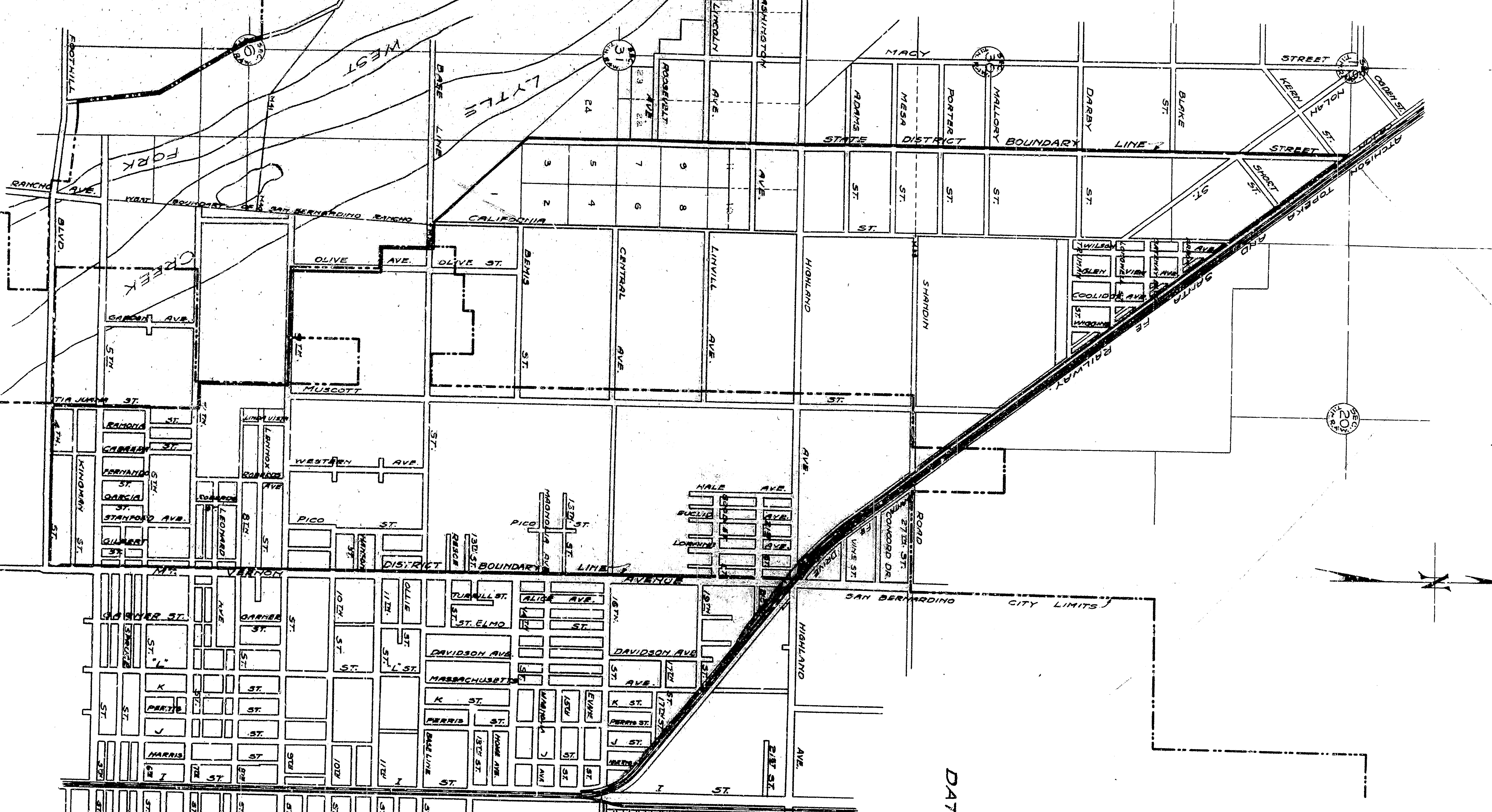


ASSESSMENT DISTRICT MAP No. 1913
 IN THE MATTER OF ACQUISITION OF IMPROVEMENT DISTRICT No. 3 OF CITY OF SAN BERNARDINO, CALIFORNIA.



SHEET No. 1
 PLAN No. 1013
 IN THE MATTER OF
 ACQUISITION AND IMPROVEMENT DISTRICT No. 3
 OF THE CITY OF SAN BERNARDINO, CALIF.
 AND
 PLANS AND PROFILES No. 1013
 AND
 ASSESSMENT DISTRICT MAP No. 1013
 FOR THE IMPROVEMENT OF
 STATE STREET
 BETWEEN
 CAJON STATE HIGHWAY AND BASE LINE STREET
 IN THE
 COUNTY OF SAN BERNARDINO, CALIF.
 NOVEMBER 1929
 R.D. FORSYTHE
 ENGINEER OF WORK
 PLAN ADOPTED ... DECEMBER 1, 1930

DATUM
 All elevations shown in Road figures
 are in feet and are above a datum which
 is established by corner C-1, 1888 City
 of San Bernardino, California.

TITLE TO STREETS TO COUNTY OF SAN BERNARDINO, CALIF.	DATE RECORDED	MAP NO.	DEED NO.
State Street from South	7-19-27	38	668-387
State Street from North	4-19-27	38	668-387
State Street (south of)	5-22-28	39	668-380
Tract No. 8353	11-22-29		
By Deed	11-22-29		
By Dec.	11-22-29		

LEGEND

1" or 1/2" in map = 100 feet on ground.
 1/2" or 1/4" in map = 50 feet on ground.
 1/4" or 1/8" in map = 25 feet on ground.
 1/8" or 1/16" in map = 12 1/2 feet on ground.
 1/16" or 1/32" in map = 6 1/4 feet on ground.
 1/32" or 1/64" in map = 3 1/8 feet on ground.
 1/64" or 1/128" in map = 1 5/8 feet on ground.
 1/128" or 1/256" in map = 7/8 feet on ground.
 1/256" or 1/512" in map = 3/8 feet on ground.
 1/512" or 1/1024" in map = 3/16 feet on ground.
 1/1024" or 1/2048" in map = 3/32 feet on ground.
 1/2048" or 1/4096" in map = 3/64 feet on ground.
 1/4096" or 1/8192" in map = 3/128 feet on ground.
 1/8192" or 1/16384" in map = 3/256 feet on ground.
 1/16384" or 1/32768" in map = 3/512 feet on ground.
 1/32768" or 1/65536" in map = 3/1024 feet on ground.
 1/65536" or 1/131072" in map = 3/2048 feet on ground.
 1/131072" or 1/262144" in map = 3/4096 feet on ground.
 1/262144" or 1/524288" in map = 3/8192 feet on ground.
 1/524288" or 1/1048576" in map = 3/16384 feet on ground.
 1/1048576" or 1/2097152" in map = 3/32768 feet on ground.
 1/2097152" or 1/4194304" in map = 3/65536 feet on ground.
 1/4194304" or 1/8388608" in map = 3/131072 feet on ground.
 1/8388608" or 1/16777216" in map = 3/262144 feet on ground.
 1/16777216" or 1/33554432" in map = 3/524288 feet on ground.
 1/33554432" or 1/67108864" in map = 3/1048576 feet on ground.
 1/67108864" or 1/134217728" in map = 3/2097152 feet on ground.
 1/134217728" or 1/268435456" in map = 3/4194304 feet on ground.
 1/268435456" or 1/536870912" in map = 3/8388608 feet on ground.
 1/536870912" or 1/1073741824" in map = 3/16777216 feet on ground.
 1/1073741824" or 1/2147483648" in map = 3/33554432 feet on ground.
 1/2147483648" or 1/4294967296" in map = 3/67108864 feet on ground.
 1/4294967296" or 1/8589934592" in map = 3/134217728 feet on ground.
 1/8589934592" or 1/17179869184" in map = 3/268435456 feet on ground.
 1/17179869184" or 1/34359738368" in map = 3/536870912 feet on ground.
 1/34359738368" or 1/68719476736" in map = 3/1073741824 feet on ground.
 1/68719476736" or 1/137438953472" in map = 3/2147483648 feet on ground.
 1/137438953472" or 1/274877907520" in map = 3/4294967296 feet on ground.
 1/274877907520" or 1/549755815040" in map = 3/8589934592 feet on ground.
 1/549755815040" or 1/1099511630080" in map = 3/17179869184 feet on ground.
 1/1099511630080" or 1/2199023260160" in map = 3/34359738368 feet on ground.
 1/2199023260160" or 1/4398046520320" in map = 3/68719476736 feet on ground.
 1/4398046520320" or 1/8796093040640" in map = 3/137438953472 feet on ground.
 1/8796093040640" or 1/17592186081280" in map = 3/274877907520 feet on ground.
 1/17592186081280" or 1/35184372162560" in map = 3/549755815040 feet on ground.
 1/35184372162560" or 1/70368744325120" in map = 3/1099511630080 feet on ground.
 1/70368744325120" or 1/140737488650240" in map = 3/2199023260160 feet on ground.
 1/140737488650240" or 1/281474977300480" in map = 3/4398046520320 feet on ground.
 1/281474977300480" or 1/562949954600960" in map = 3/8796093040640 feet on ground.
 1/562949954600960" or 1/1125899909201920" in map = 3/17592186081280 feet on ground.
 1/1125899909201920" or 1/2251799818403840" in map = 3/35184372162560 feet on ground.
 1/2251799818403840" or 1/4503599636807680" in map = 3/70368744325120 feet on ground.
 1/4503599636807680" or 1/9007199273615360" in map = 3/140737488650240 feet on ground.
 1/9007199273615360" or 1/18014398547230720" in map = 3/281474977300480 feet on ground.
 1/18014398547230720" or 1/36028797094461440" in map = 3/562949954600960 feet on ground.
 1/36028797094461440" or 1/72057594188922880" in map = 3/1125899909201920 feet on ground.
 1/72057594188922880" or 1/144115188377845760" in map = 3/2251799818403840 feet on ground.
 1/144115188377845760" or 1/288230376755691520" in map = 3/4503599636807680 feet on ground.
 1/288230376755691520" or 1/576460753511383040" in map = 3/9007199273615360 feet on ground.
 1/576460753511383040" or 1/1152921507022766080" in map = 3/18014398547230720 feet on ground.
 1/1152921507022766080" or 1/2305843014045532160" in map = 3/36028797094461440 feet on ground.
 1/2305843014045532160" or 1/4611686028091064320" in map = 3/72057594188922880 feet on ground.
 1/4611686028091064320" or 1/9223372056182128640" in map = 3/144115188377845760 feet on ground.
 1/9223372056182128640" or 1/18446744112364257280" in map = 3/288230376755691520 feet on ground.
 1/18446744112364257280" or 1/36893488224728514560" in map = 3/576460753511383040 feet on ground.
 1/36893488224728514560" or 1/73786976449457029120" in map = 3/1152921507022766080 feet on ground.
 1/73786976449457029120" or 1/147573952898914058240" in map = 3/2305843014045532160 feet on ground.
 1/147573952898914058240" or 1/295147905797828116480" in map = 3/4611686028091064320 feet on ground.
 1/295147905797828116480" or 1/590295811595656232960" in map = 3/9223372056182128640 feet on ground.
 1/590295811595656232960" or 1/1180591623191312465920" in map = 3/184467905797828116480 feet on ground.
 1/1180591623191312465920" or 1/2361183246382624931840" in map = 3/36893488224728514560 feet on ground.
 1/2361183246382624931840" or 1/4722366492765249863680" in map = 3/73786976449457029120 feet on ground.
 1/4722366492765249863680" or 1/9444732985530499727360" in map = 3/147573952898914058240 feet on ground.
 1/9444732985530499727360" or 1/18889465971060999454720" in map = 3/295147905797828116480 feet on ground.
 1/18889465971060999454720" or 1/37778931942121998909440" in map = 3/590295811595656232960 feet on ground.
 1/37778931942121998909440" or 1/75557863884243997818880" in map = 3/1180591623191312465920 feet on ground.
 1/75557863884243997818880" or 1/151115727768487995637760" in map = 3/2361183246382624931840 feet on ground.
 1/151115727768487995637760" or 1/302231455536975991275520" in map = 3/4722366492765249863680 feet on ground.
 1/302231455536975991275520" or 1/604462911073951982551040" in map = 3/9444732985530499727360 feet on ground.
 1/604462911073951982551040" or 1/1208925822147903965102080" in map = 3/18889465971060999454720 feet on ground.
 1/1208925822147903965102080" or 1/2417851644295807930204160" in map = 3/37778931942121998909440 feet on ground.
 1/2417851644295807930204160" or 1/4835703288591615860408320" in map = 3/75557863884243997818880 feet on ground.
 1/4835703288591615860408320" or 1/9671406577183231720816640" in map = 3/151115727768487995637760 feet on ground.
 1/9671406577183231720816640" or 1/19342813154366463441633280" in map = 3/302231455536975991275520 feet on ground.
 1/19342813154366463441633280" or 1/38685626308732926883266560" in map = 3/604462911073951982551040 feet on ground.
 1/38685626308732926883266560" or 1/77371252617465853766533120" in map = 3/1208925822147903965102080 feet on ground.
 1/77371252617465853766533120" or 1/154742505234931707532666240" in map = 3/2417851644295807930204160 feet on ground.
 1/154742505234931707532666240" or 1/309485010469863415065332480" in map = 3/4835703288591615860408320 feet on ground.
 1/309485010469863415065332480" or 1/618970020939726830130664960" in map = 3/96714065771832317208166560 feet on ground.
 1/618970020939726830130664960" or 1/1237940041879453660261329920" in map = 3/19342813154366463441633280 feet on ground.
 1/1237940041879453660261329920" or 1/2475880083758907320522659640" in map = 3/38685626308732926883266560 feet on ground.
 1/2475880083758907320522659640" or 1/4951760167517814641045319280" in map = 3/77371252617465853766533120 feet on ground.
 1/4951760167517814641045319280" or 1/9903520335035629282090638560" in map = 3/154742505234931707532666240 feet on ground.
 1/9903520335035629282090638560" or 1/19807040670071258564181277120" in map = 3/309485010469863415065332480 feet on ground.
 1/19807040670071258564181277120" or 1/39614081340142517128362554240" in map = 3/618970020939726830130664960 feet on ground.
 1/39614081340142517128362554240" or 1/79228162680285034256725108480" in map = 3/1237940041879453660261329920 feet on ground.
 1/79228162680285034256725108480" or 1/158456325360570068513450216960" in map = 3/2475880083758907320522659640 feet on ground.
 1/158456325360570068513450216960" or 1/316912650721140137026900433920" in map = 3/4951760167517814641045319280 feet on ground.
 1/316912650721140137026900433920" or 1/633825301442280274053800867840" in map = 3/9903520335035629282090638560 feet on ground.
 1/633825301442280274053800867840" or 1/1267650602884560548107601735680" in map = 3/19807040670071258564181277120 feet on ground.
 1/1267650602884560548107601735680" or 1/2535301205769121096215203471360" in map = 3/39614081340142517128362554240 feet on ground.
 1/2535301205769121096215203471360" or 1/5070602411538242192430406942720" in map = 3/79228162680285034256725108480 feet on ground.
 1/5070602411538242192430406942720" or 1/10141204822676484384860813885440" in map = 3/158456325360570068513450216960 feet on ground.
 1/10141204822676484384860813885440" or 1/20282409645352968769721627770880" in map = 3/316912650721140137026900433920 feet on ground.
 1/20282409645352968769721627770880" or 1/40564819290705937539443255541760" in map = 3/633825301442280274053800867840 feet on ground.
 1/40564819290705937539443255541760" or 1/81129638581411875078886111083520" in map = 3/1267650602884560548107601735680 feet on ground.
 1/81129638581411875078886111083520" or 1/162259273642823750157772222167040" in map = 3/2535301205769121096215203471360 feet on ground.
 1/162259273642823750157772222167040" or 1/324518547285647500315544444334080" in map = 3/5070602411538242192430406942720 feet on ground.
 1/324518547285647500315544444334080" or 1/649037094571295000631088888668160" in map = 3/101412048226764843848608111083520 feet on ground.
 1/649037094571295000631088888668160" or 1/1298074189142590001262177777336320" in map = 3/20282409645352968769721627770880 feet on ground.
 1/1298074189142590001262177777336320" or 1/259614837828518000252435555472640" in map = 3/40564819290705937539443255541760 feet on ground.
 1/259614837828518000252435555472640" or 1/519229675657036000504871111145280" in map = 3/81129638581411875078886111083520 feet on ground.
 1/519229675657036000504871111145280" or 1/103845935131407200100974222280560" in map = 3/162259273642823750157772222167040 feet on ground.
 1/103845935131407200100974222280560" or 1/207691870262814400201948444561120" in map = 3/324518547285647500315544444334080 feet on ground.
 1/207691870262814400201948444561120" or 1/415383740525628800403896889122240" in map = 3/649037094571295000631088888668160 feet on ground.
 1/415383740525628800403896889122240" or 1/830767481051257600807793778244480" in map = 3/129807418914259000252435555472640 feet on ground.
 1/830767481051257600807793778244480" or 1/1661534962102515201615587576488960" in map = 3/259614837828518000504871111145280 feet on ground.
 1/1661534962102515201615587576488960" or 1/3323069924205030403231175152977920" in map = 3/519229675657036000504871111145280 feet on ground.
 1/3323069924205030403231175152977920" or 1/6646139848410060806462350305955840" in map = 3/103845935131407200100974222280560 feet on ground.
 1/6646139848410060806462350305955840" or 1/13292279696820121612924700611911680" in map = 3/207691870262814400201948444561120 feet on ground.
 1/13292279696820121612924700611911680" or 1/26584559393640243225849401223823360" in map = 3/415383740525628800403896889122240 feet on ground.
 1/26584559393640243225849401223823360" or 1/53169118787280486451698802447646720" in map = 3/830767481051257600807793778244480 feet on ground.
 1/53169118787280486451698802447646720" or 1/10633823757456097290339764895293440" in map = 3/1661534962102515201615587576488960 feet on ground.
 1/10633823757456097290339764895293440" or 1/21267647514912194580679529790586880" in map = 3/3323069924205030403231175152977920 feet on ground.
 1/21267647514912194580679529790586880" or 1/42535295029824389161359059581173760" in map = 3/6646139848410060806462350305955840 feet on ground.
 1/42535295029824389161359059581173760" or 1/85070590059648778322718119162347520" in map = 3/13292279696820121612924700611911680 feet on ground.
 1/85070590059648778322718119162347520" or 1/170141180119297556645436238324695040" in map = 3/26584559393640243225849401223823360 feet on ground.
 1/170141180119297556645436238324695040" or 1/340282360238595113290872476649390080" in map = 3/53169118787280486451698802447646720 feet on ground.
 1/340282360238595113290872476649390080" or 1/680564720477190226581744953298780160" in map = 3/10633823757456097290339764895293440 feet on ground.
 1/680564720477190226581744953298780160" or 1/1361129440954380453163489906597560320" in map = 3/21267647514912194580679529790586880 feet on ground.
 1/1361129440954380453163489906597560320" or 1/2722258801908760906326979813175120640" in map = 3/42535295029824389161359059581173760 feet on ground.
 1/2722258801908760906326979813175120640" or 1/5444517603817521812653959626350241280" in map = 3/85070590059648778322718119162347520 feet on ground.
 1/5444517603817521812653959626350241280" or 1/10889035207635043625307919252700482560" in map = 3/170141180119297556645436238324695040 feet on ground.
 1/10889035207635043625307919252700482560" or 1/21778070415270087250615838505400965120" in map = 3/340282360238595113290872476649390080 feet on ground.
 1/21778070415270087250615838505400965120" or 1/43556140830540174511231677010801930240" in map = 3/680564720477190226581744953298780160 feet on ground.
 1/43556140830540174511231677010801930240" or 1/87112281661080349022463344

